

An aerial photograph showing a large, winding water reservoir or dam project. The water is a deep blue, contrasting with the surrounding green and brown agricultural fields. The reservoir has several small islands and peninsulas. In the background, there are some buildings and more fields. The overall scene is a rural landscape with a significant water management project.

California's State Water Project

Jennifer Pierre
State Water Contractors
February 2025

Who are the State Water Contractors?



- 29 public water agencies
- Hold contracts with CA Department of Water Resources for State Water Project participation and water supplies
- Pay all water supply costs of the State Water Project
- SWP is only one part of each of their portfolios



State Water Project Contractors

- Mostly water for cities and businesses
- 27 million Californians, or 1 in 12 Americans
- 750,000 acres of farmland (25% of SWP)
- Ratepayers have invested over \$30B since the 1960



Regional Overview of State Water Project Supplies



BAY AREA

North Bay Water Supply: 11%
South Bay Water Supply: 33%
3 Million Residents
3,500 Square Miles Served

SAN JOAQUIN VALLEY

Water Supply: 25-33%
1 Million Residents
750,000 Acres of Farmland
9,500 Square Miles Served

INLAND EMPIRE

Water Supply: 28%
1 Million Residents
700 Square Miles Served

CENTRAL COAST

Water Supply: 47%
620,000 Residents
7,000 Square Miles Served

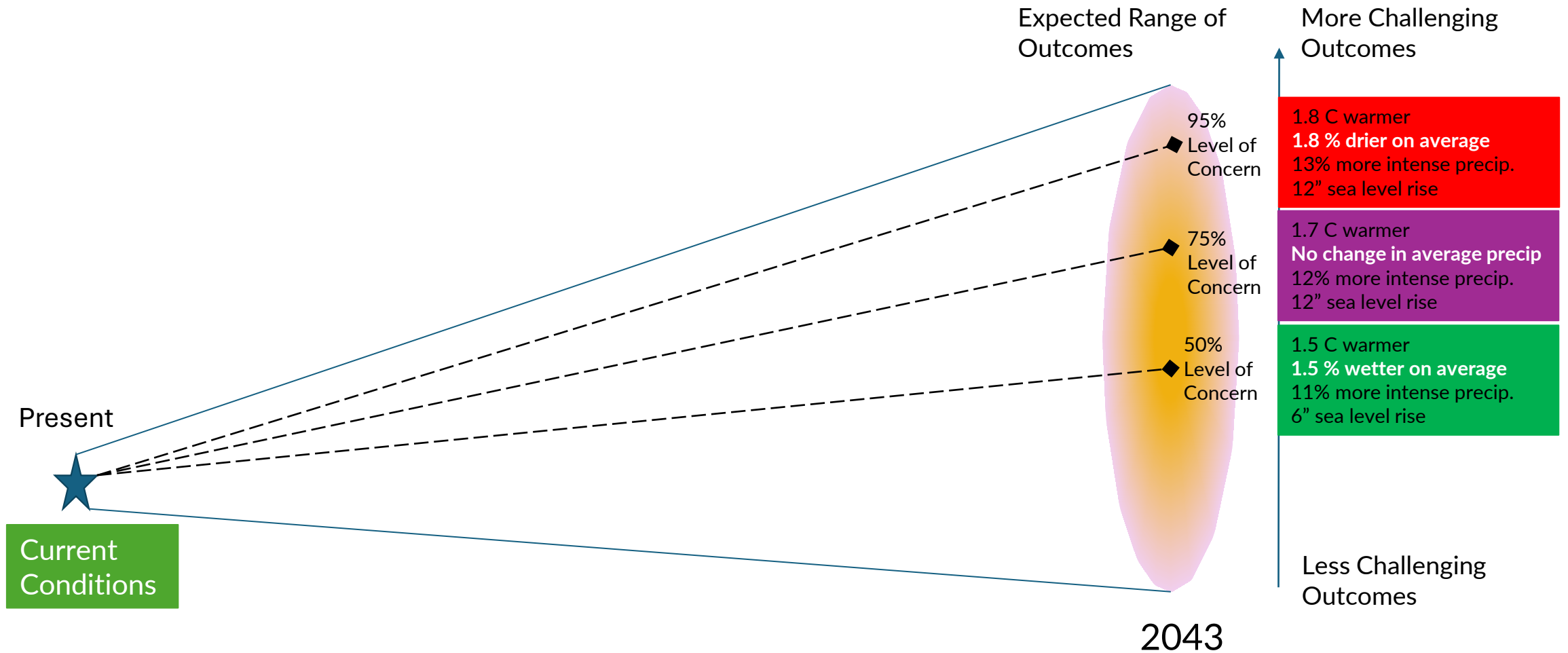
SOUTHERN CALIFORNIA

Water Supply: 30%
19.5 Million Residents
5,200 Square Miles Served

DESERT

High Desert Water Supply: 30%
Low Desert Water Supply: 15%
1.2 Million Residents
8,500 Square Miles Served

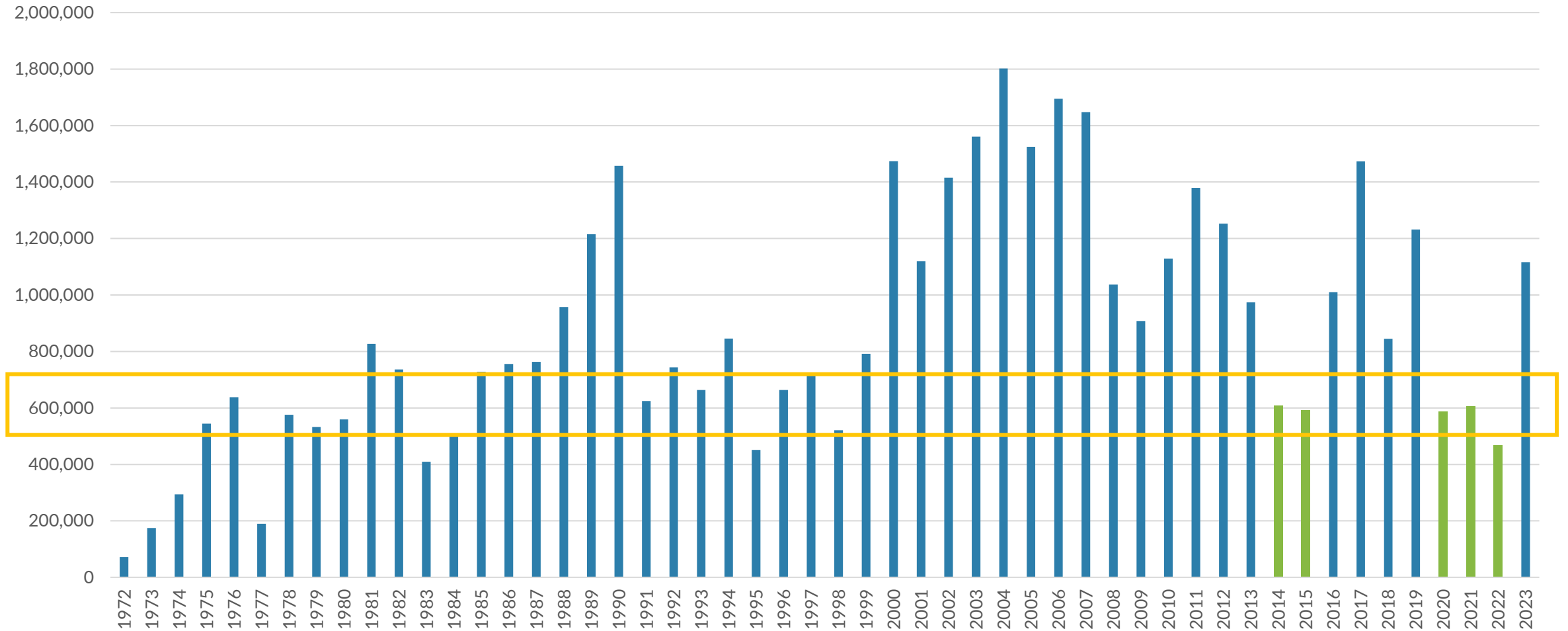
2024 Delivery Capability Report: Delta not drying, just shifting



State Water Project Delivers- Even in Drought



MWD SWP Deliveries



SWP Provides Critical, Irreplaceable Supplies



- 2.7 million acre-feet annual on average (more than 3 full Diamond Valley Lakes, or 48 Carlsbad Desal Plants)
- SWP water supports local and regional projects
 - Refilling reservoirs
 - Groundwater recharge and storage
 - Recycled water
 - Water quality management
- Currently one of the most affordable supplies available to urban agencies
- In 2019, all SWC's renewed their SWP contract through 2085



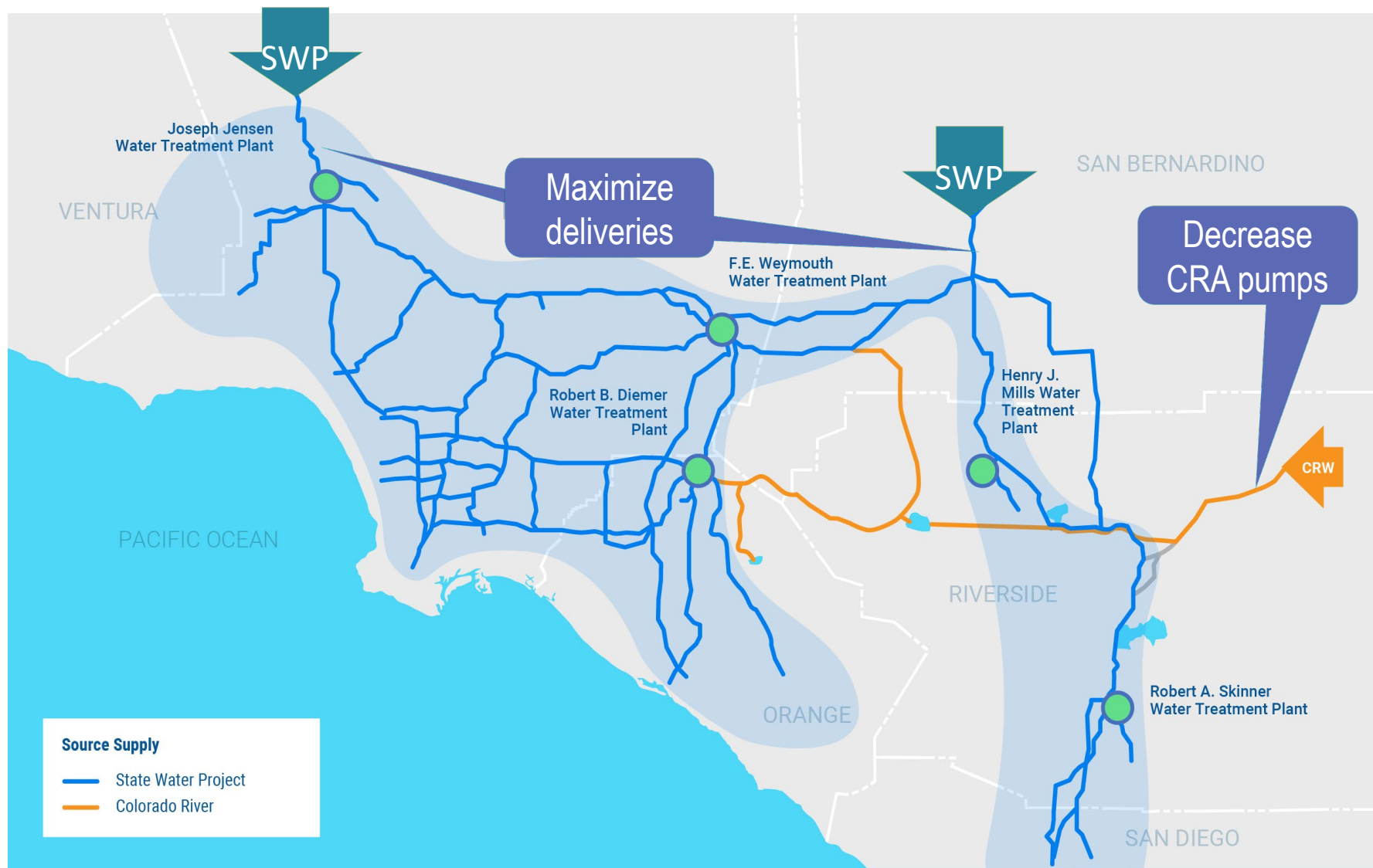
Metropolitan Distribution System

Operational
Flexibility:
Adapting to
Changing
Conditions



Wet Year Operations

Maximized SWP Supplies



Minimized SWP Deliveries

Dry Year
Operations



Addressing Affordability while Achieving Climate Resilience and Environmental Stewardship

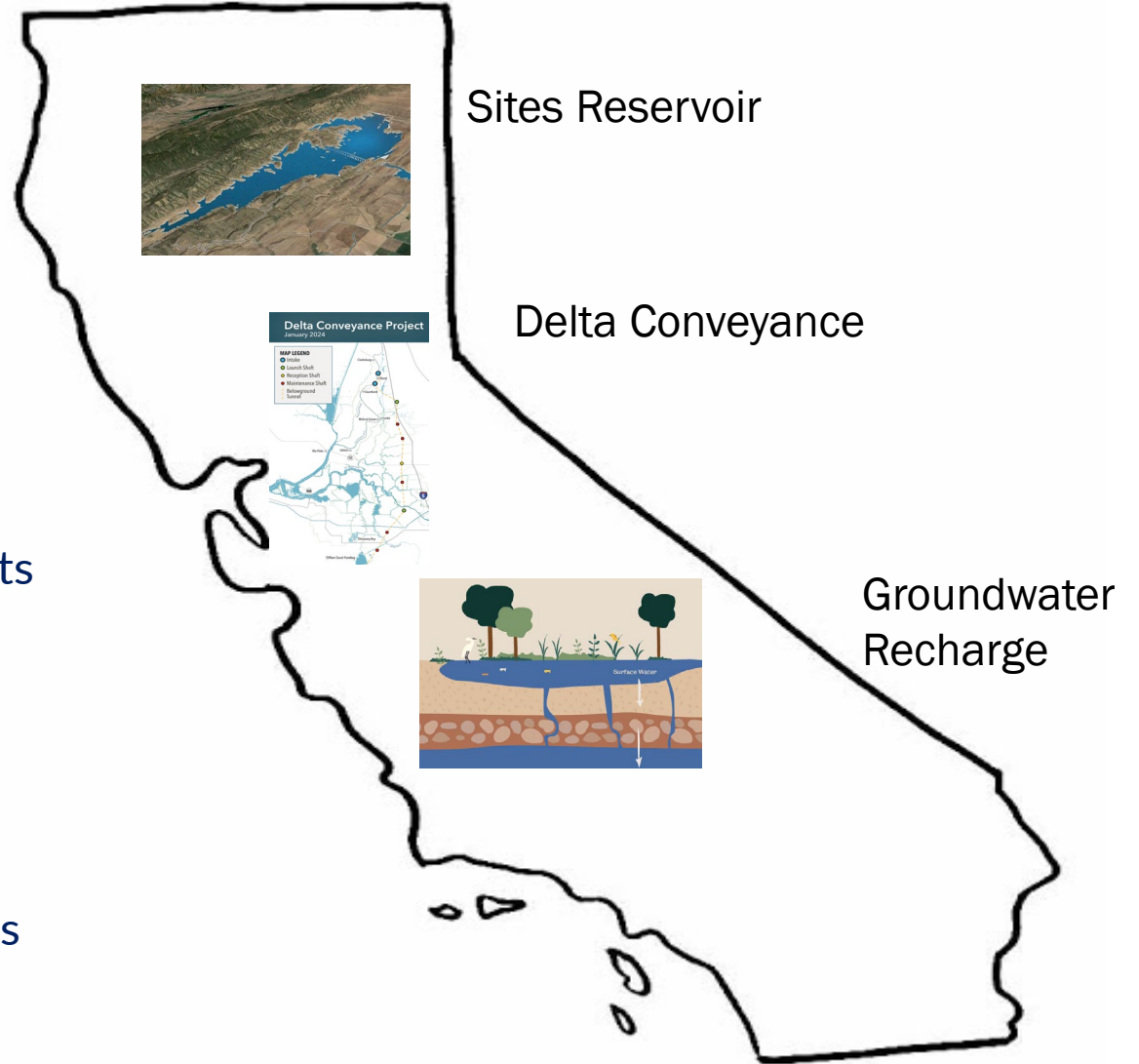


Increasing supply reliability

- Climate-responsive operational rules
- Delta Conveyance Project
- Subsidence repairs to major canals
- Increased storage capacity
 - Sites Reservoir and other Prop 1 storage projects
 - Underground storage

Managing costs

- Appropriate statewide investment for public benefits
- Efficient planning and permitting
- Ensuring increasing energy costs are not solely placed on water users



Ongoing SWP Environmental Actions and Commitments

- Reduced exports to eliminate/minimize entrainment of fish
- Significant investments in science and research (\$50M annually)
- Restoration of over 7,000 acres of wetland habitat in the Delta
- Restoration of the Yolo notch to significantly increase floodplain availability for salmon
- Science to inform improved hatchery management

Environmental Provisions of Delta Conveyance



Construction Impacts have been eliminated or reduced

	California WaterFix (2017)	Delta Conveyance Project (2023)
Conveyance	Two tunnels, 35 miles each	One tunnel, 45 miles
Operation Type	Dual conveyance, allowing for through-Delta operations. North Delta Diversion prioritized	Dual conveyance, allowing for through-Delta operations. South Delta Diversion prioritized
Capacity	9,000 cfs (Down from original 15,000 cfs)	6,000 cfs
Number of Intakes	3	2
Alignment	Through center of Delta	Along east side, avoiding central Delta
Fish Screens	3 intakes, linear fish screens with cleaning apparatus visible above water line 2,000 feet long	2 intakes, t-shaped fish screens, with cleaning apparatus below surface 1,500 feet long
Potential Agricultural Land Impact	Approximately 3,550 acres	Approximately 2,400 acres
Construction Traffic on Highway 160	Yes	No
Forebays Needed	Yes, 2	None, connect directly to the California Aqueduct
Number of Barge Landings	3 intakes and Victoria island	None
Tunnel Launch Launch Shaft Sites	Located at intakes and sites away from intakes	Located away from intakes

Operational & Other Improvements to minimize impacts

- No upstream reservoir reoperations
- Only excess flows are diverted when ALL other requirements are met (fish, water quality, senior rights)
- More than 150 tribal government-to-government consultations
- \$200M in dedicated community benefits funding
- Job training and leave behinds for community